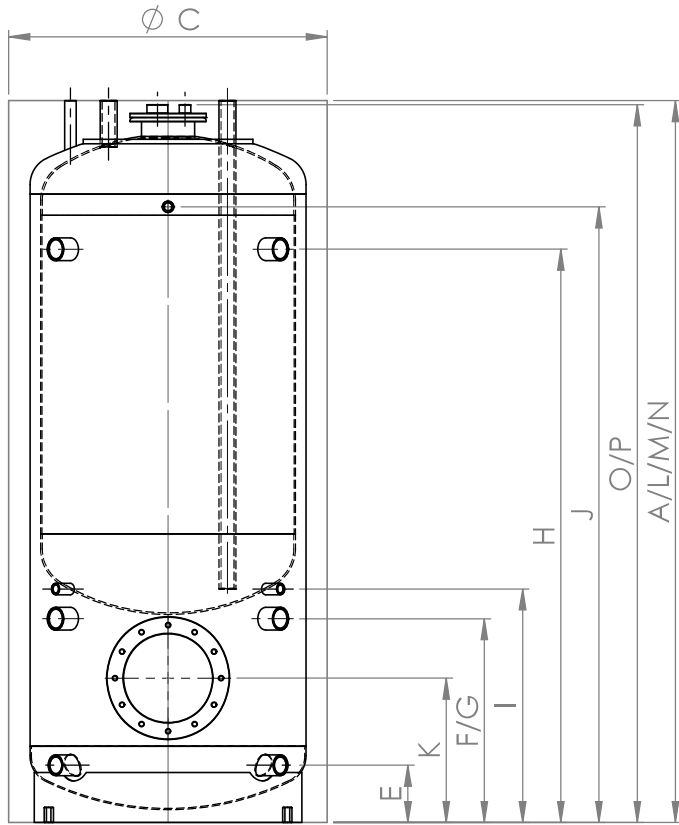


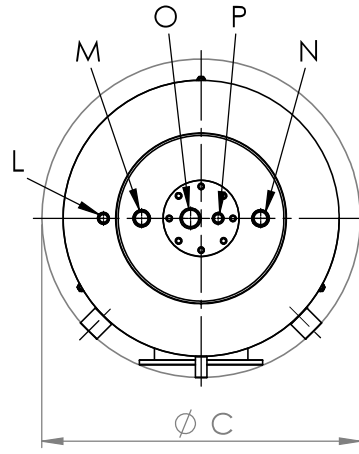
**Speicher mit Doppelmantel**  
**Double-jacketed hot water storage tank**  
**Ballon double-paroi**  
**Accumulatori con doppio mantello**  
**BDF/E 300/200**

**Emailliert**  
Enamelled | Émaillés | Smaltato

300/200



300/200



300/200



	Verwendung Usage Utilisation Uso	Dimension Dimension Dimension Dimensione	300/200
A	Höhe Height   Hauteur   Altezza	⊙ – mm	1730
B		○ – mm	-
C	∅	⊙ – mm	750
E	Rücklauf Return   Retour   Ritorno	↕ – mm	135
		G"	1 ½"
F	Elektroheizung zum Einschrauben* Screw-in Immersion heater*   Résistances à visser*   Resistenza elettrica da avvitare*	↕ – mm	480
		G"	1 ½"
G	Vorlauf Supply   Départ   Mandata	↕ – mm	480
		G"	1 ½"
H	Vorlauf Supply   Départ   Mandata	↕ – mm	1350
		G"	1 ½"
I	Fühler Sensor   Sonde   Sensore	↕ – mm	550
		G"	½"
J	Thermometer Thermometer   Thermomètre   Termometro	↕ – mm	1450
		G"	½"
K	Flansch Flange   Bride   Flangia	↕ – mm	340
		G"	290/220
L	Entlüftung Puffer Buffer tank vent   Purge Ballon de stockage   Sfiato tampone	↕ – mm	1730
		G"	½"
M	Warmwasser Hot water   Eau chaude   Acqua calda	↕ – mm	1730
		G"	1"
N	Kaltwasser Cold water   Eau froide   Acqua fredda	↕ – mm	1730
		G"	1"
O	Magnesiumanode Magnesium anode   Anode de magnésium   Anodo in magnesio	↕ – mm	1690
		G"	1 ¼"
P	Fühler Brauchwasser Service water sensor   Sonde eau industrielle   Sensore acqua per uso domestico	↕ – mm	1690
		∅ – mm	½"

\*Einbaumöglichkeit: 1 x Elektroheizung zum Einschrauben  
Installation option: 1 x Screw-in Immersion heater | Option d'installation: 1 x Résistances à visser | Opzione di installazione: 1 x Resistenza elettrica da avvitare